

ROYAL CHAPEL OF St. JOHN THE BAPTIST, St. JOHN'S, ISLE OF MAN.

Trail for children (of all ages!)

Explanatory notes and answers are also available



YOUR NAME

Start the trail inside the south porch.
Follow the numbers from 1-14.

1 The Building

Go to A on the plan and onto B in the South Transept. Look on the east wall and find a painting showing the church as it was in 1699 as well as the present one. Can you list three parts of the new church that are different from those of the old church?



1. _____ 2. _____
3. _____

2 Manx Government

During annual Tynwald Day celebrations this church becomes the Tynwald Courthouse. There are special seats at the front of the transepts, marked B on the plan. Who are they for?

They are for Members of the
H _____ of K _____

3 Council Seats

Go to the chancel (see plan).

Find the seats reserved for the members of the LEGISLATIVE COUNCIL.

Mark these seats on the plan with the letters LC.

4 The Sanctuary

This church is also known as THE ROYAL CHAPEL. The Queen has a chair in the sanctuary for Tynwald Ceremonies. Can you find her chair? Draw the feature which tells you it is her chair here.

5 Three East Windows

Look up at the pictures in the EAST WINDOWS above the altar. Write down the three things they tell you about the life of Christ?

1. _____

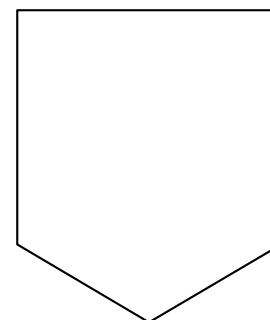
2. _____

3. _____

7 Manx Coat of Arms

Now turn around and look up towards the west gallery. Look for the MANX COAT OF ARMS there. Can you name the two birds shown there?

Draw the Three Legs of Man in the middle of the shield here.



6 Gospel Writers

Look at the tiled floor in front of the altar. On it are signs of the four EVANGELISTS (messengers) who wrote the four gospels (good news) in the Bible.

St. Matthew's sign is a winged man.

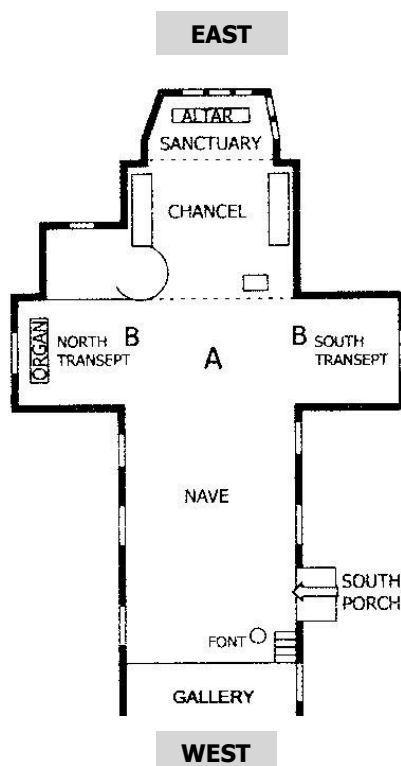
St. Mark's sign is a winged lion.

St. Luke's sign is a winged ox.

What is St. John's sign?

An E _____

Can you draw it here?



8 Pulpit

Look at the plan and find the line that divides the chancel from the nave. There are two pieces of furniture here that are used for teaching about Christianity.

1. Find the PULPIT and mark it on the plan with a P.
2. Who stands up here to talk and why do you think they stand there?

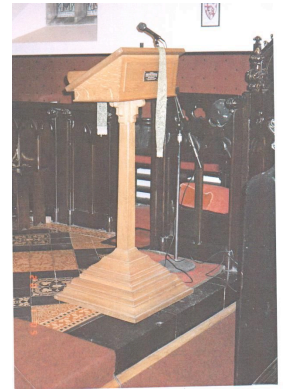


9 Lectern

Now find the LECTERN, which is a reading desk. Mark it on the plan with an L. What is the name of the book on the lectern?

The H _ _ _ _

B _ _ _ _



10 The North & South Transepts

Go to the NORTH TRANSEPT and find something large that helps us to sing together in tune. It is the O _ _ _ _

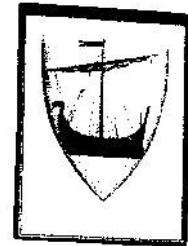
In the left-hand windows opposite in the SOUTH TRANSEPT are three other musical instruments.

Draw one of them here.

1. _____
2. _____
3. _____

11 Viking Ship

Move towards the north end of the west wall. Find this picture and mark it on your plan with an S for Ship. What does it tell you about Manx History?



12 Font

Move back towards the centre of the west end of the nave and find the FONT, where baptisms (christenings) take place.

What materials have been used to make the FONT?

How many sides does it have? _____

What is this shape called? _____

What is put into the font for baptisms? W _ _ _ _

14 South Porch

Go back out into the SOUTH PORCH. There is something here that was discovered over a hundred years ago when the church was being re-built, that tells you about the age of this site.

Try to draw some of the pattern here.

13 Jesus and the Children

Above the staircase near the south door is a window that shows Jesus' special relationship with children.

How many children can you see in the window?

What toys can you see?